



# Extruded Products

Marine	49
Transport	53
Insulation	59
Architectural	65
Sign Profiles	79

## Updates

Due to continuous product development, some information may have been updated since the time of publishing this manual. Altus reserves the right to amend specifications and make changes to products without prior notice and without incurring any obligation. Altus accepts no responsibility for loss or consequential loss due to inaccuracies at the time of publishing or of subsequent changes made. Altus will keep [www.altus.co.nz](http://www.altus.co.nz) updated. The manual is subject to copyright by the proprietors, Altus NZ Ltd.

The information contained in this catalogue is true and correct to the best of our knowledge. Any recommendations or specifications are made without guarantee on the part of Altus NZ Ltd. Altus NZ Ltd disclaim any liability in connection with the use of this information.

© 2018 All Rights Reserved.

# Marine

## Extruded Products

### Bulb Stringers Type A



Die Number	A (mm)	B (mm)	C (mm)	Mass kg/m	Perimeter (mm)	Ex Stock
E12811	58.00	15.00	6.00	1.378	138	•
E13306	75.00	15.00	6.00	1.660	172	•
E13307	100.00	15.00	6.00	2.067	222	•

### Bulb Stringers Type B



Die Number	A (mm)	B (mm)	C (mm)	Mass kg/m	Perimeter (mm)	Ex Stock
609528	50.00	25.00	6.00	1.104	132	•
609529	75.00	25.00	6.00	1.666	190	•
609527	100.00	25.00	6.00	2.072	240	•

✓ Stocked

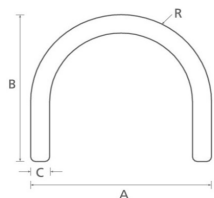
- Mill runs only, Subject to minimum quantities - please ask regarding the availability of these.

Please note that diagrams, data and images are used for guidance purposes only. For correct details please request a specific die drawing from Altus Customer Services as radius locations and other specifications may vary. All peripheries less than 100mm are deemed 100mm for surface finish purpose.

# Marine

## Extruded Products

### Curved Channels



Die Number	A (mm)	B (mm)	C (mm)	R (Radii) (mm)	Mass kg/m	Perimeter (mm)	Ex Stock	Stocked Length (mm)	Stocked Alloy Temper	Mill Finish SAP Code
E04215	38.00	32.00	4.00	1.00	0.855	165	✓	5000	6261 T5	805950
								5000	6060 T5	832507
								6800	6060 T5	820910
								7500	6060 T5	832487
609609	40.00	30.00	3.00	20.00	0.291	159	•			
E13634	50.00	36.00	5.00	20.00	1.228	191	✓	5000	6060 T5	827459
								5000	6060 T591	830364
609610	50.00	35.00	4.00	25.00	2.075	190	•			
E05903	60.00	45.00	5.00	30.00	1.704	239	✓	5000	6106 T6	811500
								5000	6060 T591	830162
609611	60.00	45.00	5.00	30.00	0.562	240	•			
E13635	75.00	55.00	7.20	37.50	2.759	296	•			
609612	75.00	55.00	6.00	37.50	5.856	296	•	5000	6060 T5	816976
E12244	100.00	75.00	6.00	50.00	4.397	406	•			

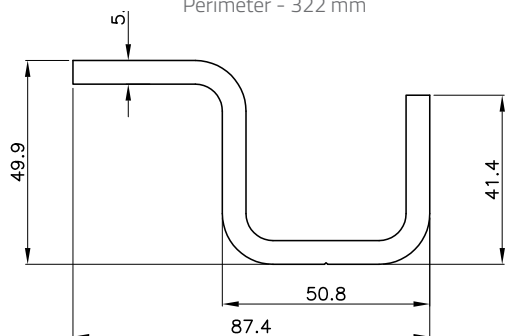
✓ Stocked

- Mill runs only, Subject to minimum quantities - please ask regarding the availability of these.

Please note that diagrams, data and images are used for guidance purposes only. For correct details please request a specific die drawing from Altus Customer Services as radius locations and other specifications may vary. All peripheries less than 100mm are deemed 100mm for surface finish purpose.

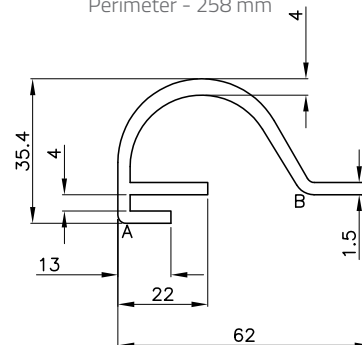
### 604122 - Hook (Gunnel)

Mass - 2.434 kg/m  
Perimeter - 322 mm



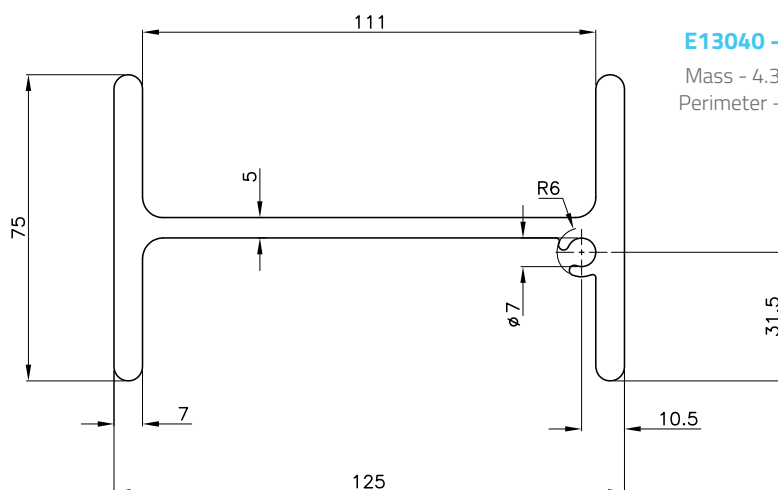
### 609658 - Gunnel

Mass - 1,132 kg/m  
Perimeter - 258 mm



### E13040 - I Beam

Mass - 4.397 kg/m  
Perimeter - 534 mm



Mill runs only, Subject to minimum quantities - please ask regarding the availability of these.

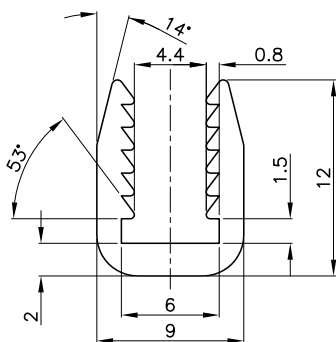
Please note that diagrams, data and images are used for guidance purposes only. For correct details please request a specific die drawing from Altus Customer Services as radius locations and other specifications may vary. All peripheries less than 100mm are deemed 100mm for surface finish purpose.

# Marine

## Extruded Products

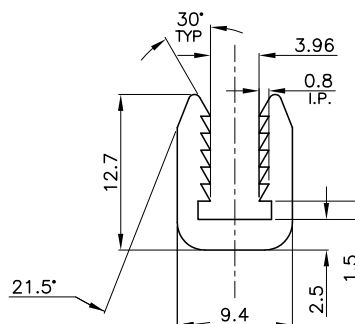
### E11710 - Perspec Cap

Mass - 0.134 kg/m  
Perimeter - 69 mm  
Stocked 5m - 6060T4 - 821306



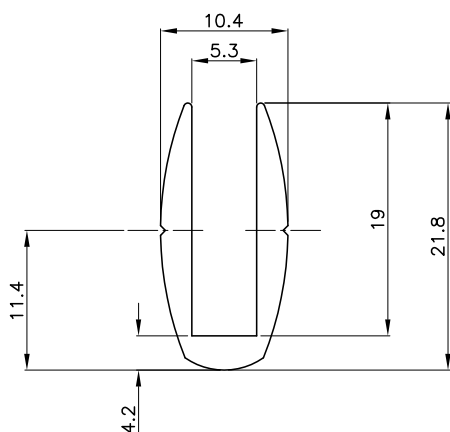
### 609540 - Perspec Cap

Mass - 0.172 kg/m  
Perimeter - 73 mm



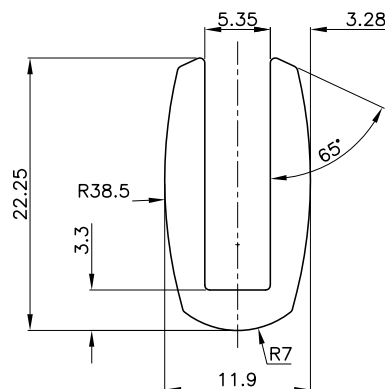
### 609542 - Perspec Cap

Mass - 0.250 kg/m  
Perimeter - 94 mm



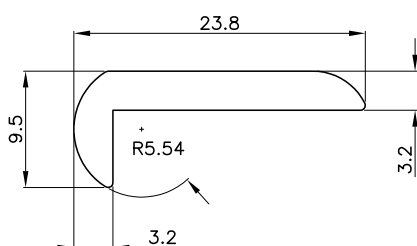
### E03609 - Windscreen Mould

Mass - 0.361 kg/m  
Perimeter - 97 mm  
Stocked 5.5m - 6060T4 - 811188



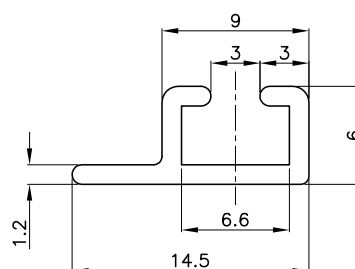
### E03270 - Angle

Mass - 0.231 kg/m  
Perimeter - 61 mm



### E11733 - Curtain Track

Mass - 0.087 kg/m  
Perimeter - 55 mm



Mill runs only, Subject to minimum quantities - please ask regarding the availability of these.

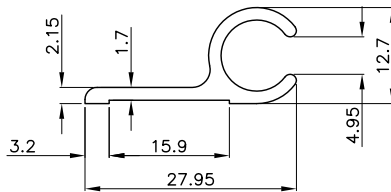
Please note that diagrams, data and images are used for guidance purposes only. For correct details please request a specific die drawing from Altus Customer Services as radius locations and other specifications may vary. All peripheries less than 100mm are deemed 100mm for surface finish purpose.

# Transport

## Extruded Products

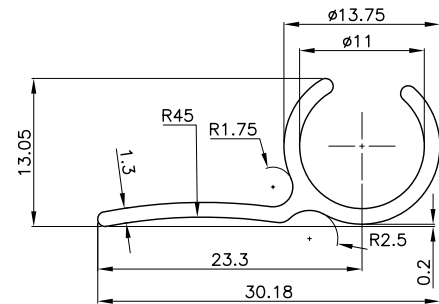
### 609312 - One Leg Awning

Mass - 0.228 kg/m  
Perimeter - 95 mm



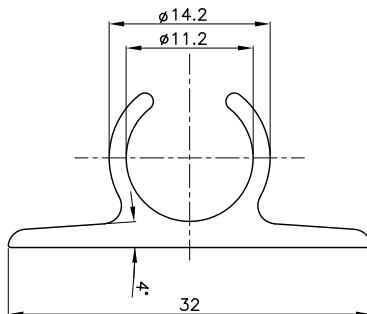
### E03490 - One Leg Awning

Mass - 0.188 kg/m  
Perimeter - 102 mm  
Stocked 5m - 6060T5 - 803647



### E00111 - Two Leg Awning

Mass - 0.289 kg/m  
Perimeter - 109 mm  
Stocked 5m - 6060T4 - 803541



Mill runs only, Subject to minimum quantities - please ask regarding the availability of these.

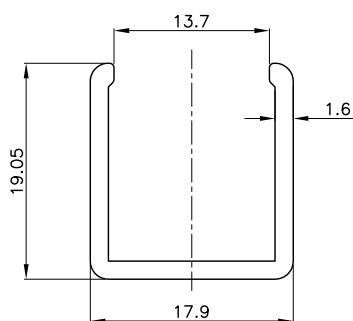
Please note that diagrams, data and images are used for guidance purposes only. For correct details please request a specific die drawing from Altus Customer Services as radius locations and other specifications may vary. All peripheries less than 100mm are deemed 100mm for surface finish purpose.

# Transport

## Extruded Products

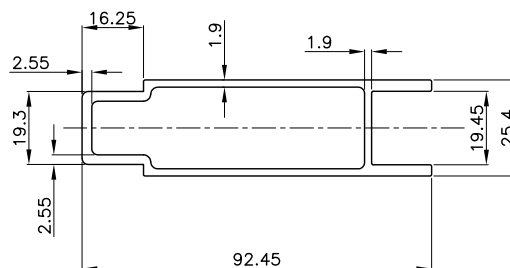
### E03352 - Channel

Mass - 0.227 kg/m  
Perimeter - 107 mm



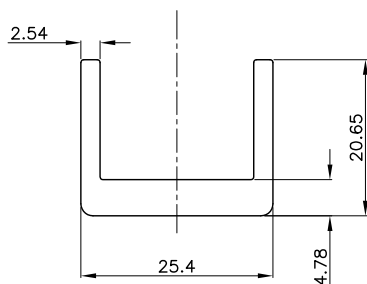
### E00266 - Legged RHS

Mass - 1.347 kg/m  
Perimeter - 265 mm  
Fits - E00267



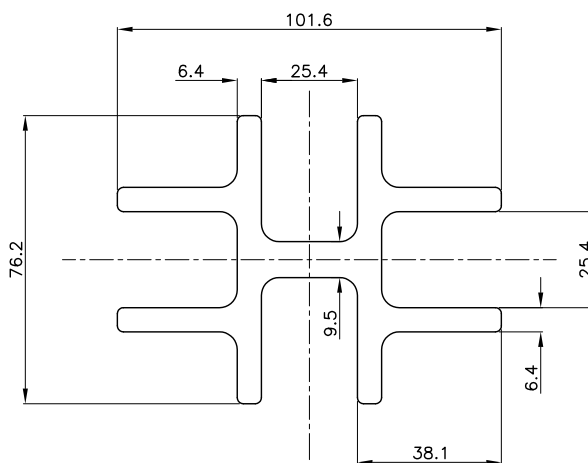
### E00267 - Channel

Mass - 0.545 kg/m  
Perimeter - 122 mm  
Fits - E00266



### E04128 - Jointer

Mass - 5.606 kg/m  
Perimeter - 581 mm



Mill runs only, Subject to minimum quantities - please ask regarding the availability of these.

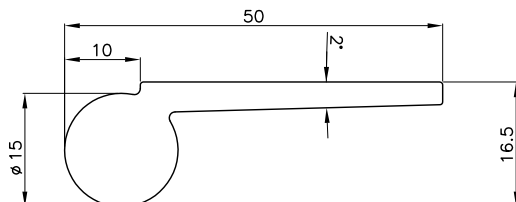
Please note that diagrams, data and images are used for guidance purposes only. For correct details please request a specific die drawing from Altus Customer Services as radius locations and other specifications may vary. All peripheries less than 100mm are deemed 100mm for surface finish purpose.

# Transport

## Extruded Products

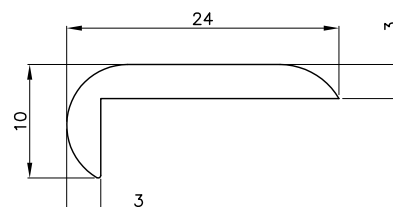
### E03637 - Jointer

Mass - 0.851 kg/m  
Perimeter - 123 mm



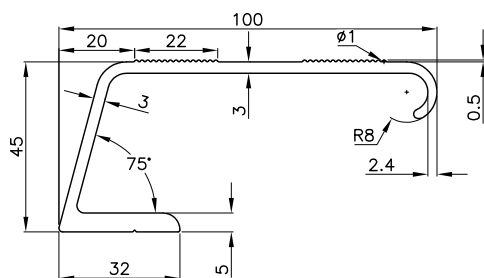
### 609380 - Runner Board

Mass - 0.212 kg/m  
Perimeter - 62 mm



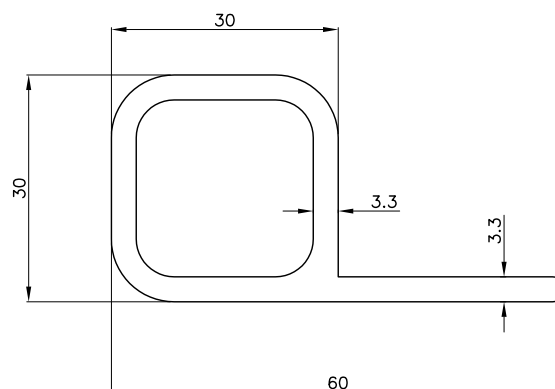
### E06839 - Handrail

Mass - 1.533 kg/m  
Perimeter - 353 mm



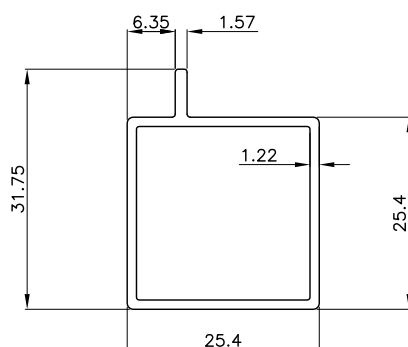
### E04886 - P Section

Mass - 1.154 kg/m  
Perimeter - 253 mm



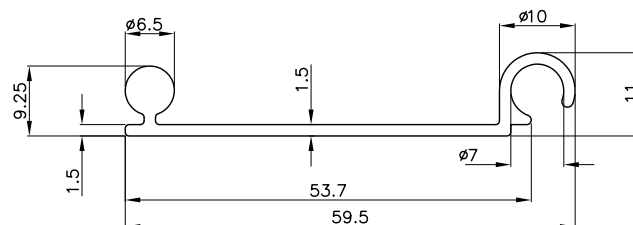
### E07125 - Lipped Channel

Mass - 0.344 kg/m  
Perimeter - 203 mm



### E00229 - Roller Door

Mass - 0.396 kg/m  
Perimeter - 167 mm



Mill runs only, Subject to minimum quantities - please ask regarding the availability of these.

Please note that diagrams, data and images are used for guidance purposes only. For correct details please request a specific die drawing from Altus Customer Services as radius locations and other specifications may vary. All peripheries less than 100mm are deemed 100mm for surface finish purpose.

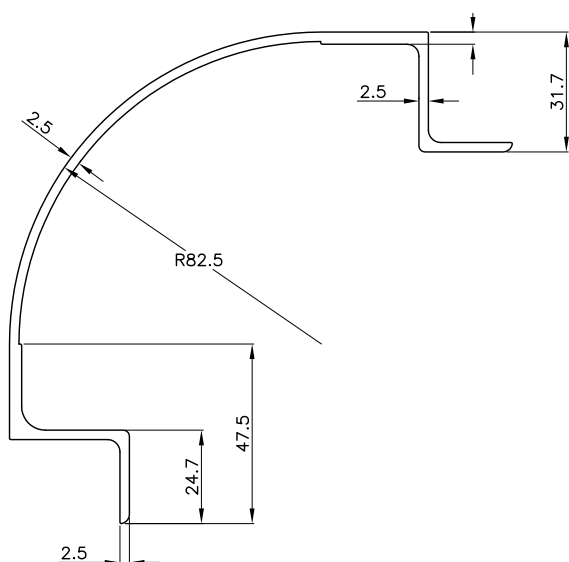


# Transport

## Extruded Products

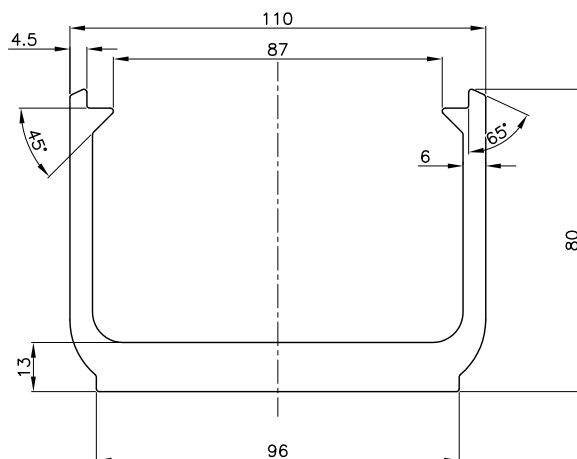
### E01953 - Cool Room Cove

Mass - 2.039 kg/m  
Perimeter - 562 mm



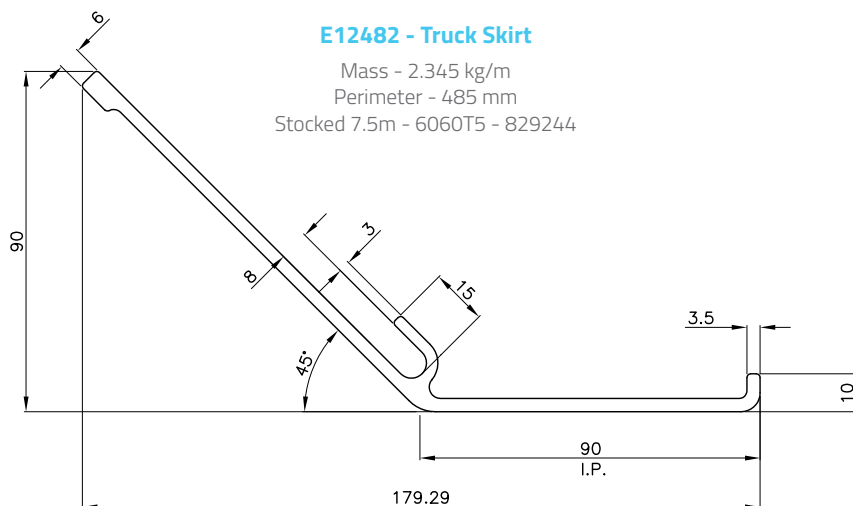
### E13895 - Chassis Channel

Mass - 5.854 kg/m  
Perimeter - 507 mm  
Stocked 6.5 - 6261T5 - 828402



### E12482 - Truck Skirt

Mass - 2.345 kg/m  
Perimeter - 485 mm  
Stocked 7.5m - 6060T5 - 829244

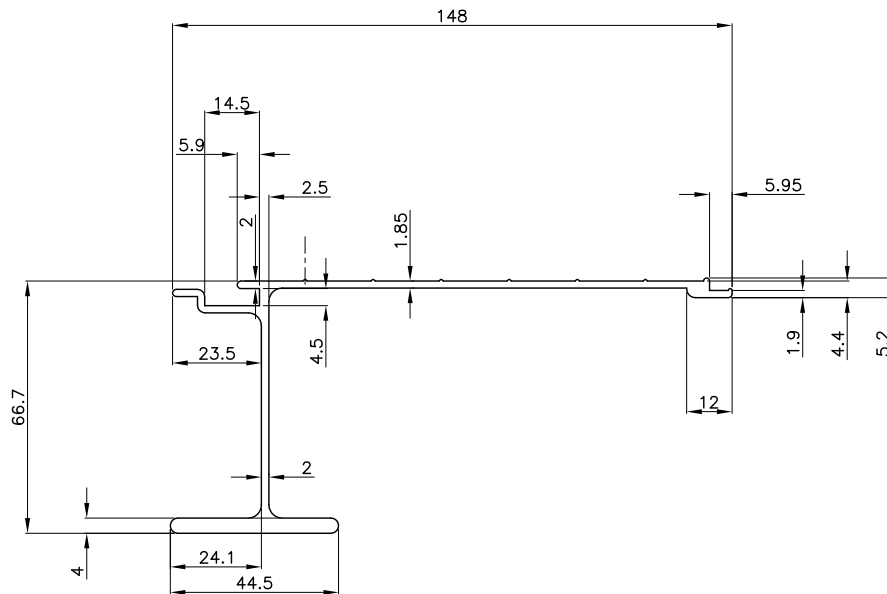


Mill runs only, Subject to minimum quantities - please ask regarding the availability of these.

Please note that diagrams, data and images are used for guidance purposes only. For correct details please request a specific die drawing from Altus Customer Services as radius locations and other specifications may vary. All peripheries less than 100mm are deemed 100mm for surface finish purpose.

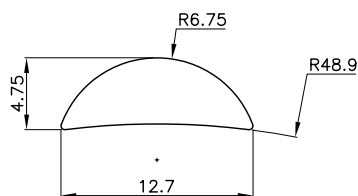
### 609821 - Tray Deck

Mass - 1.680 kg/m  
Perimeter - 529 mm



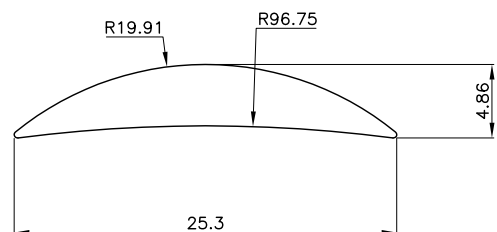
### E13107 - Half Round

Mass - 0.114 kg/m  
Perimeter - 30 mm



### E00236 - Half Round

Mass - 0.198 kg/m  
Perimeter - 53 mm



Mill runs only, Subject to minimum quantities - please ask regarding the availability of these.

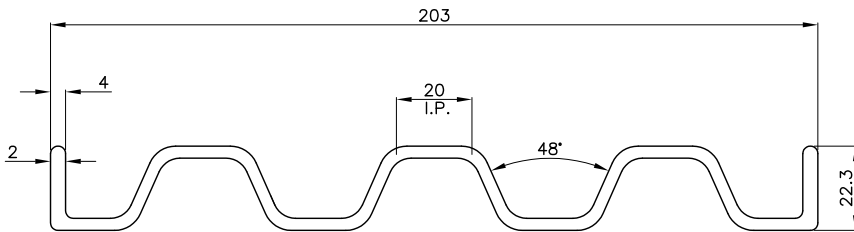
Please note that diagrams, data and images are used for guidance purposes only. For correct details please request a specific die drawing from Altus Customer Services as radius locations and other specifications may vary. All peripheries less than 100mm are deemed 100mm for surface finish purpose.

# Transport

## Extruded Products

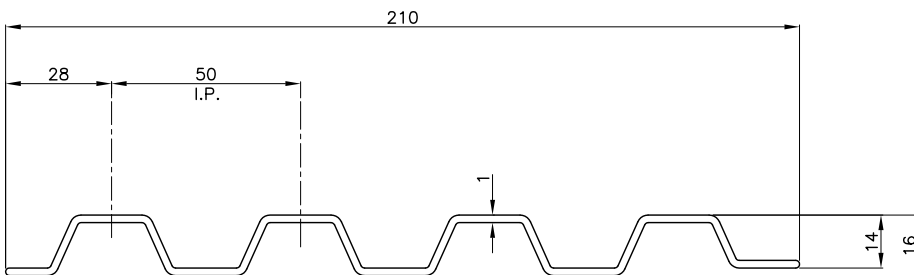
### 609670 - Runner Board

Mass - 2.751 kg/m  
Perimeter - 607 mm



### 609296 - Runner Board

Mass - 1.496 kg/m  
Perimeter - 555 mm



Mill runs only, Subject to minimum quantities - please ask regarding the availability of these.

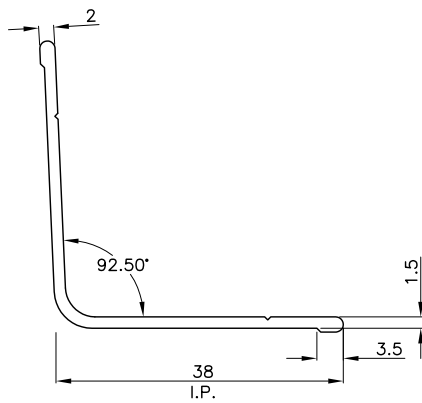
Please note that diagrams, data and images are used for guidance purposes only. For correct details please request a specific die drawing from Altus Customer Services as radius locations and other specifications may vary. All peripheries less than 100mm are deemed 100mm for surface finish purpose.

# Insulation

## Extruded Products

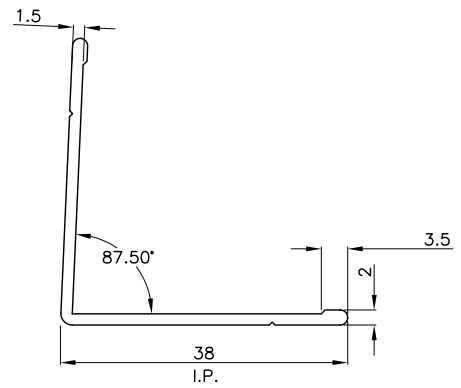
### 404563 - Internal Angle

Mass - 0.303 kg/m  
Perimeter - 149 mm



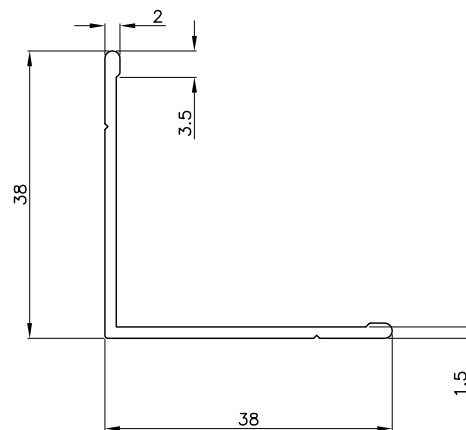
### 404564 - External Angle

Mass - 0.306 kg/m  
Perimeter - 151 mm



### 611813 - Angle

Mass - 0.308 kg/m  
Perimeter - 152 mm



Mill runs only, Subject to minimum quantities - please ask regarding the availability of these.

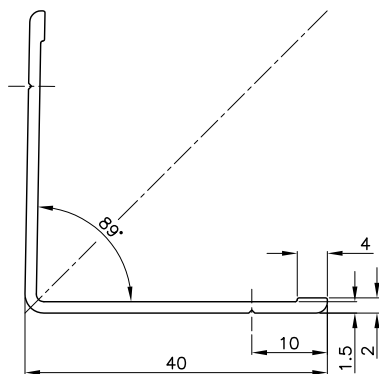
Please note that diagrams, data and images are used for guidance purposes only. For correct details please request a specific die drawing from Altus Customer Services as radius locations and other specifications may vary. All peripheries less than 100mm are deemed 100mm for surface finish purpose.

# Insulation

## Extruded Products

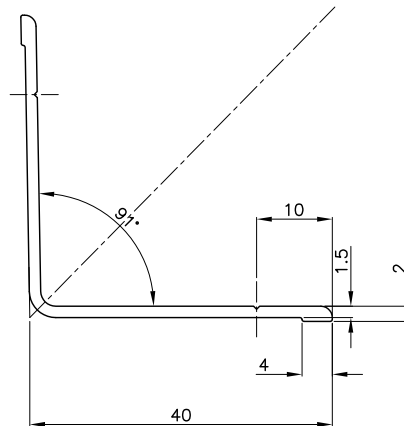
### E11872 - External Angle

Mass - 0.321 kg/m  
Perimeter - 159 mm  
Stocked 6 m - 6060T5 - 829179



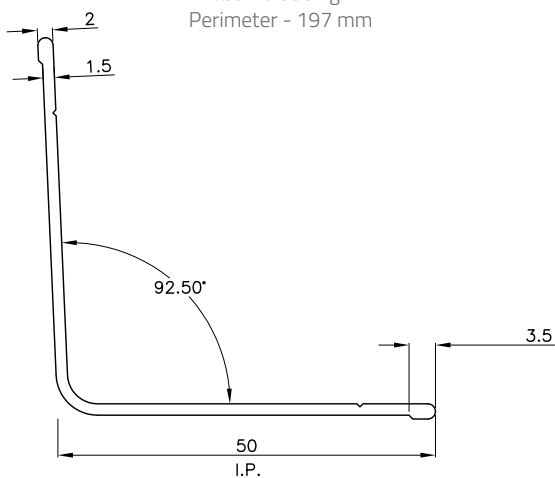
### E11873 - Internal Angle

Mass - 0.322 kg/m  
Perimeter - 159 mm  
Stocked 6 m - Titania Matt 829179



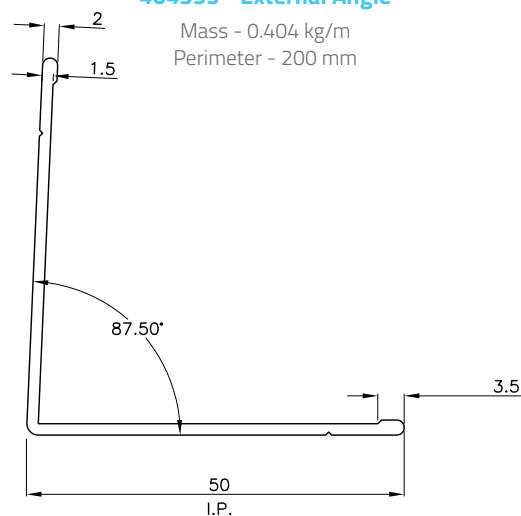
### 404586 - Internal Angle

Mass - 0.399 kg/m  
Perimeter - 197 mm



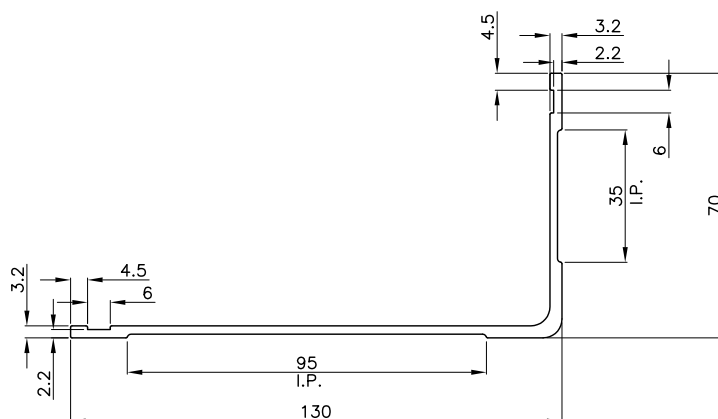
### 404593 - External Angle

Mass - 0.404 kg/m  
Perimeter - 200 mm



### E03867 - Angle

Mass - 1.304 kg/m  
Perimeter - 400 mm



Mill runs only, Subject to minimum quantities - please ask regarding the availability of these.

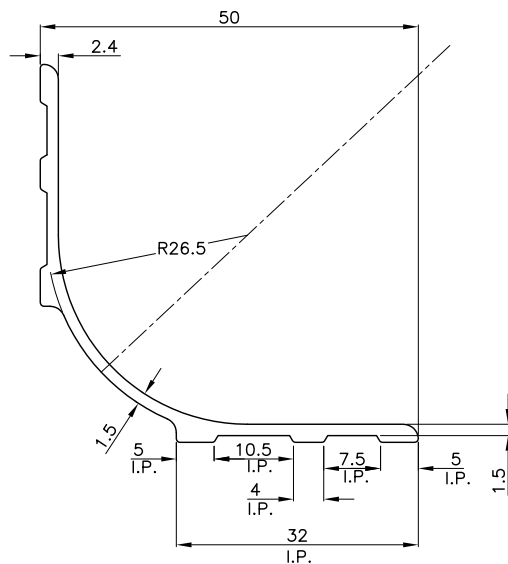
Please note that diagrams, data and images are used for guidance purposes only. For correct details please request a specific die drawing from Altus Customer Services as radius locations and other specifications may vary. All peripheries less than 100mm are deemed 100mm for surface finish purpose.

# Insulation

## Extruded Products

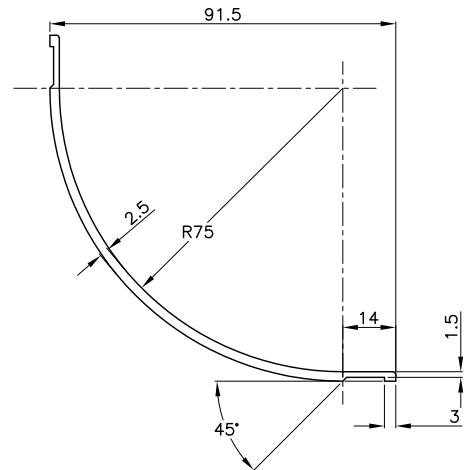
### E12808 - Cool Room Cove

Mass - 0.445 kg/m  
Perimeter - 182 mm



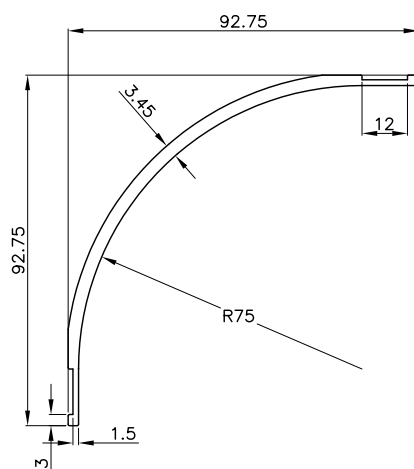
### 404266 - Coving

Mass - 0.944 kg/m  
Perimeter - 302 mm



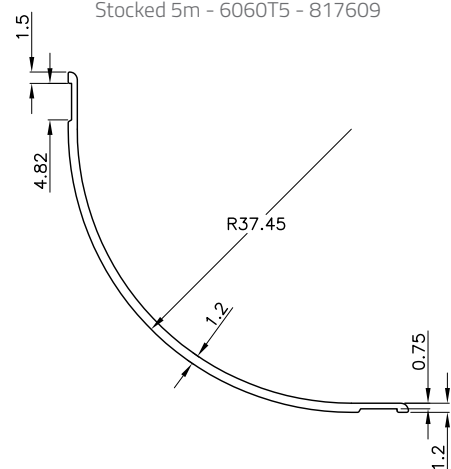
### 609520 - Coving

Mass - 1.242 kg/m  
Perimeter - 310 mm



### E12809 - Cool Room Cove

Mass - 0.893 kg/m  
Perimeter - 297 mm  
Stocked 5m - 6060T5 - 817609



Mill runs only, Subject to minimum quantities - please ask regarding the availability of these.

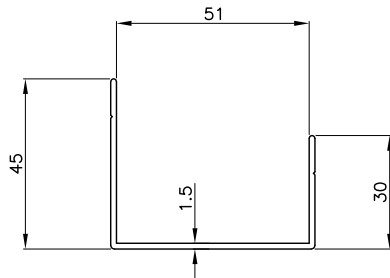
Please note that diagrams, data and images are used for guidance purposes only. For correct details please request a specific die drawing from Altus Customer Services as radius locations and other specifications may vary. All peripheries less than 100mm are deemed 100mm for surface finish purpose.

# Insulation

## Extruded Products

### 404558 - Odd Leg Channel

Mass - 0.509 kg/m  
Perimeter - 253 mm



### 404616 - Channel

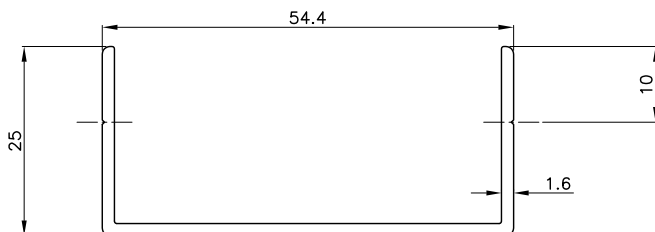
Mass - 0.326 kg/m  
Perimeter - 204 mm



### E11967 - Channel

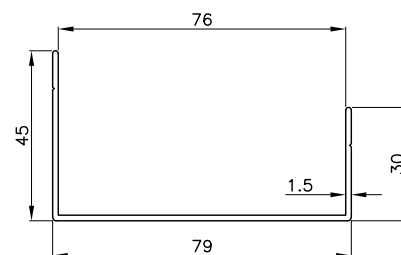
Mass - 0.434 kg/m  
Perimeter - 204 mm

Stocked 6 m - Titania Matt 829662 - 6060T5  
Stocked 6 m - Mill Finish 829172 - 6060T5



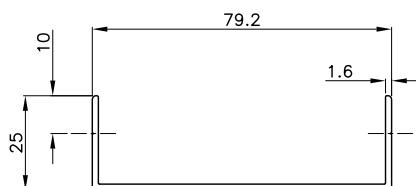
### 404560 - Channel

Mass - 0.608 kg/m  
Perimeter - 304 mm



### E11968 - Channel

Mass - 0.542 kg/m  
Perimeter - 253 mm  
Stocked 5m - 6060T5 - 810070



Mill runs only, Subject to minimum quantities - please ask regarding the availability of these.

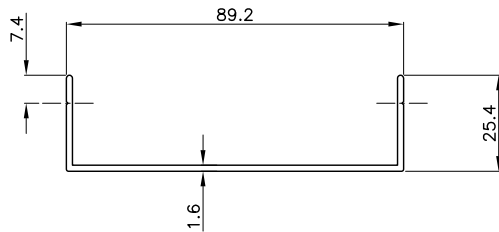
Please note that diagrams, data and images are used for guidance purposes only. For correct details please request a specific die drawing from Altus Customer Services as radius locations and other specifications may vary. All peripheries less than 100mm are deemed 100mm for surface finish purpose.

# Insulation

## Extruded Products

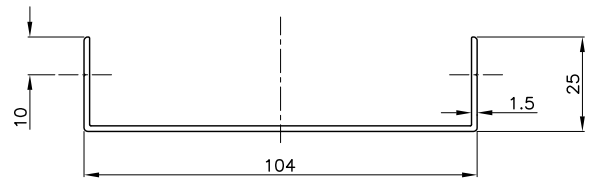
### E12812 - Channel

Mass - 0.588 kg/m  
Perimeter - 276 mm



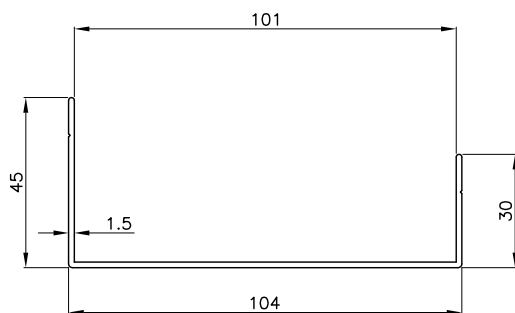
### E11966 - Channel

Mass - 0.609 kg/m  
Perimeter - 303 mm



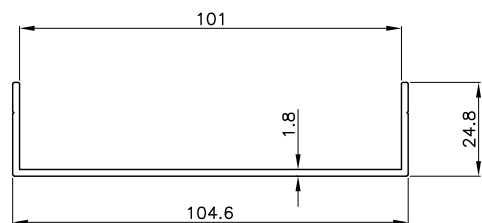
### 404562 - Channel

Mass - 0.712 kg/m  
Perimeter - 353 mm



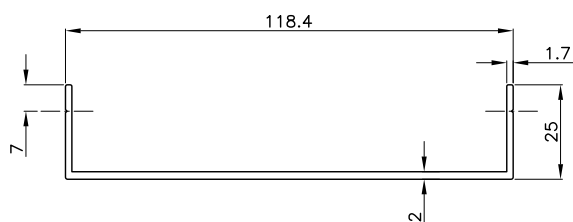
### 611296 - Channel

Mass - 0.733 kg/m  
Perimeter - 304 mm



### E12813 - Channel

Mass - 0.849 kg/m  
Perimeter - 332 mm



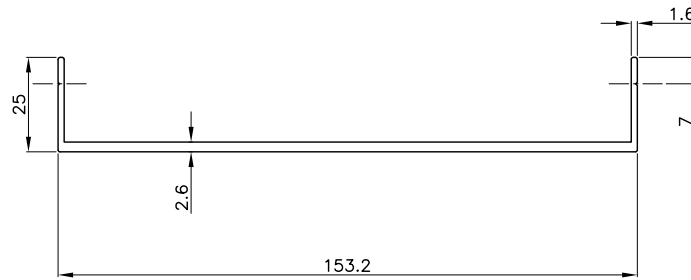
Mill runs only, Subject to minimum quantities - please ask regarding the availability of these.

Please note that diagrams, data and images are used for guidance purposes only. For correct details please request a specific die drawing from Altus Customer Services as radius locations and other specifications may vary. All peripheries less than 100mm are deemed 100mm for surface finish purpose.



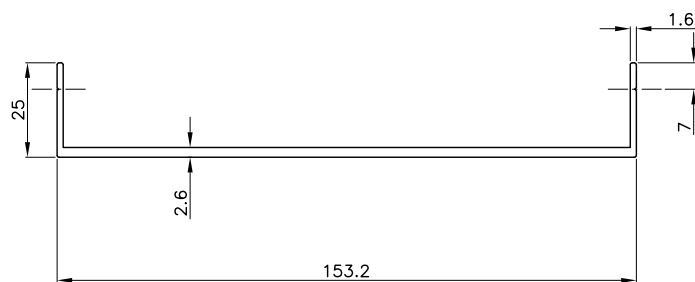
### E12814 - Channel

Mass - 1.267 kg/m  
Perimeter - 401 mm



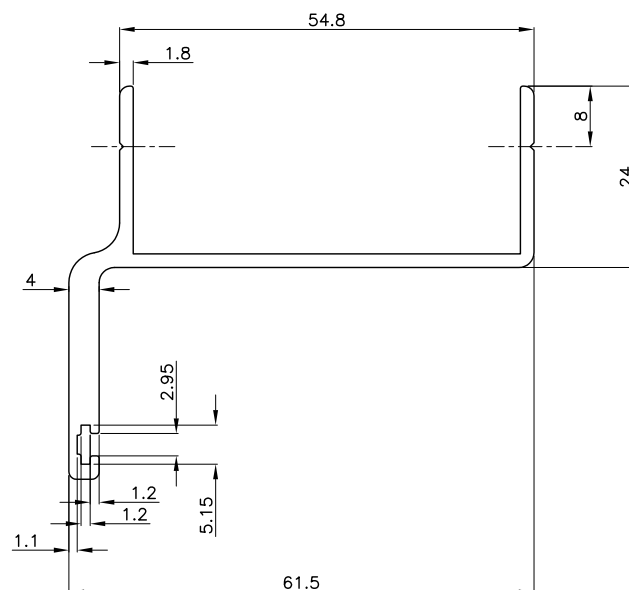
### E12815 - Channel

Mass - 1.42 kg/m  
Perimeter - 430 mm



### E12807 - 50mm Wall Door Rebate

Mass - 0.785 kg/m  
Perimeter - 274 mm

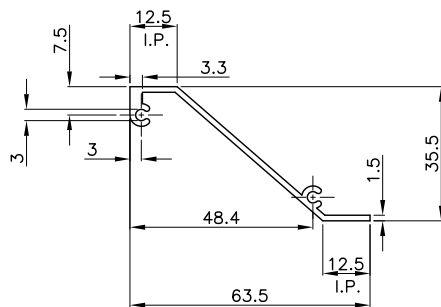


Mill runs only, Subject to minimum quantities - please ask regarding the availability of these.

Please note that diagrams, data and images are used for guidance purposes only. For correct details please request a specific die drawing from Altus Customer Services as radius locations and other specifications may vary. All peripheries less than 100mm are deemed 100mm for surface finish purpose.

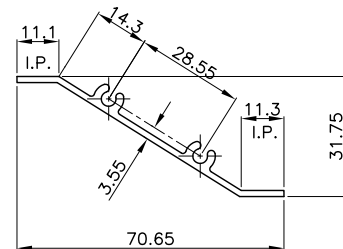
## 604506 - Arch. Louvre

Mass - 0.420 kg/m  
Perimeter - 195 mm



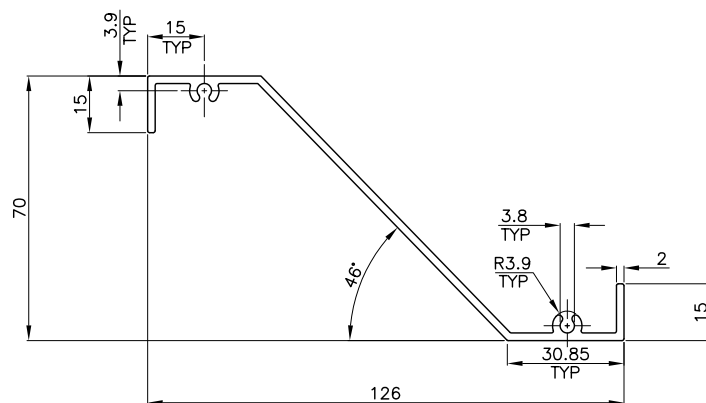
## 603057 - Arch. Louvre

Mass - 0.461 kg/m  
Perimeter - 195 mm



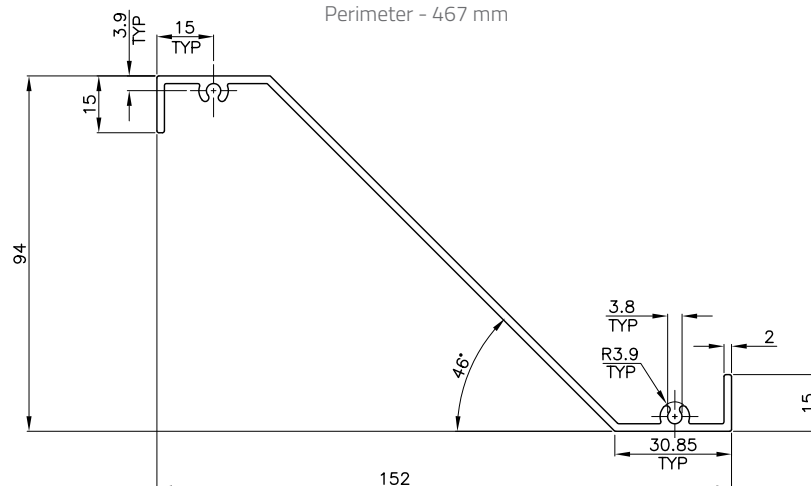
## E12395 - Arch Louvre

Mass - 1.084 kg/m  
Perimeter - 397 mm



## E12396 - Arch Louvre

Mass - 1.274 kg/m  
Perimeter - 467 mm



Mill runs only, Subject to minimum quantities - please ask regarding the availability of these.

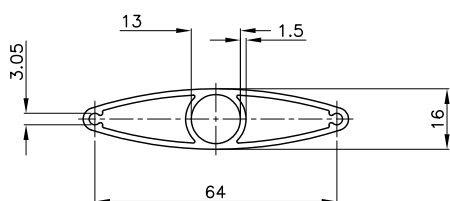
Please note that diagrams, data and images are used for guidance purposes only. For correct details please request a specific die drawing from Altus Customer Services as radius locations and other specifications may vary. All peripheries less than 100mm are deemed 100mm for surface finish purpose.

# Architectural

## Extruded Products

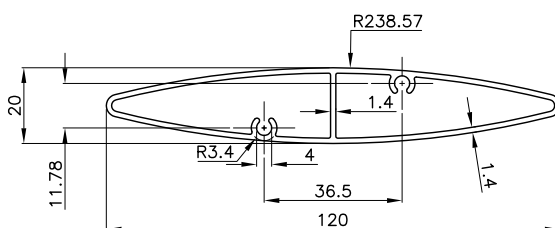
### 612002 - Louvre

Mass - 0.739 kg/m  
Perimeter - 149 mm



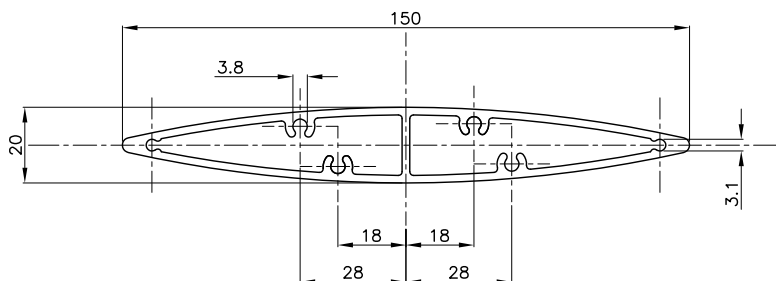
### E13616 - Louvre

Mass - 1.068 kg/m  
Perimeter - 249 mm  
Stocked 6 m - 826426 - 6060T5



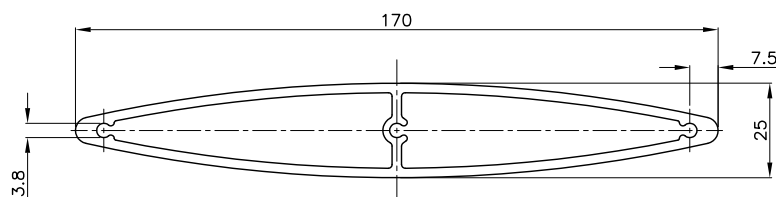
### 613626 - Louvre

Mass - 1.962 kg/m  
Perimeter - 307 mm



### 611284 - Louvre

Mass - 2.542 kg/m  
Perimeter - 350 mm



Mill runs only, Subject to minimum quantities - please ask regarding the availability of these.

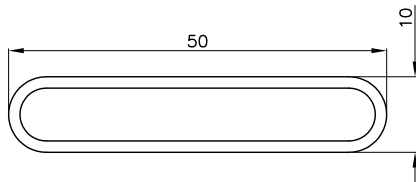
Please note that diagrams, data and images are used for guidance purposes only. For correct details please request a specific die drawing from Altus Customer Services as radius locations and other specifications may vary. All peripheries less than 100mm are deemed 100mm for surface finish purpose.

# Architectural

## Extruded Products

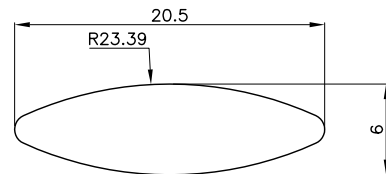
### 611632 - Paling

Mass - 0.434 kg/m  
Perimeter - 111 mm



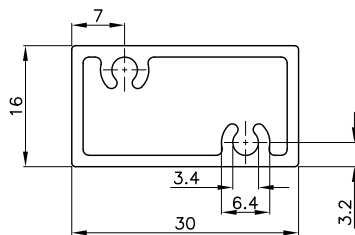
### E01723 - Mould

Mass - 0.246 kg/m  
Perimeter - 44 mm



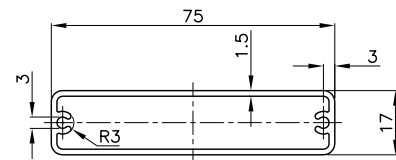
### 603029 - RHS Screw Ports

Mass - 0.426 kg/m  
Perimeter - 91 mm



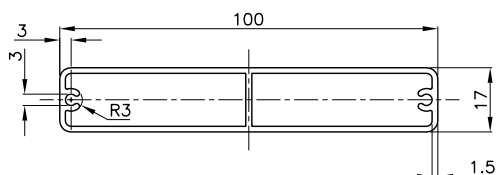
### E14074 - Paling

Mass - 0.772 kg/m  
Perimeter - 374 mm  
Stocked 6m - 829054 - 6060T5



### E14073 - Paling

Mass - 1.036 kg/m  
Perimeter - 499 mm  
Stocked 6m - 829052 - 6060T5

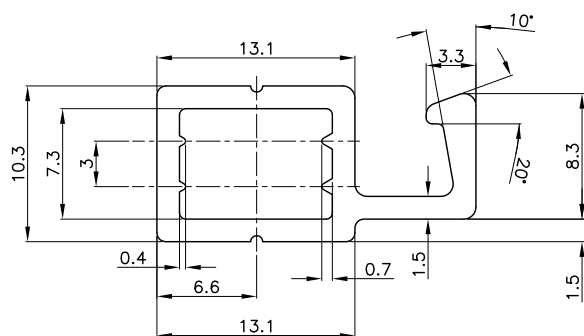


Mill runs only, Subject to minimum quantities - please ask regarding the availability of these.

Please note that diagrams, data and images are used for guidance purposes only. For correct details please request a specific die drawing from Altus Customer Services as radius locations and other specifications may vary. All peripheries less than 100mm are deemed 100mm for surface finish purpose.

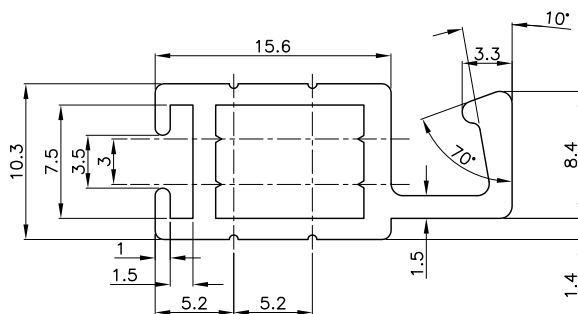
### E04114 - Window Insect Screen

Mass - 0.237 kg/m  
Perimeter - 113 mm  
Stocked 5 m - 803660 - 6060T5



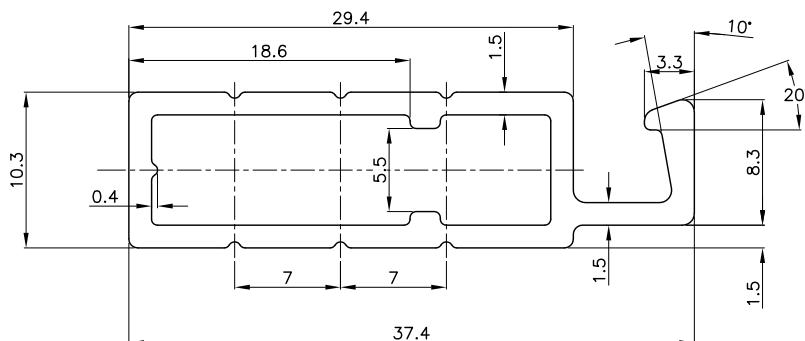
### E04273 - Window Insect Screen

Mass - 0.265 kg/m  
Perimeter - 131 mm  
Stocked 5 m - 803664 - 6060T5



### E04174 - Window / Door Insect Screen

Mass - 0.373kg/m  
Perimeter - 179 mm  
Stocked 5 m - 803663 - 6060T5

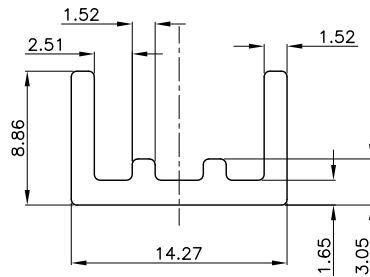


Mill runs only, Subject to minimum quantities - please ask regarding the availability of these.

Please note that diagrams, data and images are used for guidance purposes only. For correct details please request a specific die drawing from Altus Customer Services as radius locations and other specifications may vary. All peripheries less than 100mm are deemed 100mm for surface finish purpose.

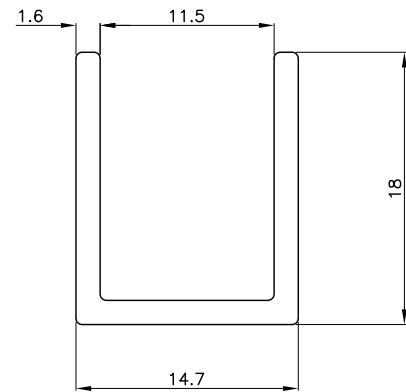
### E01640 - Bottom Track

Mass - 0.134 kg/m  
Perimeter - 64 mm  
Stocked 5 m - 803610 - 6060T5



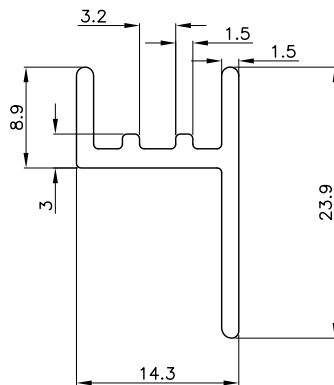
### E03815 - Channel / Top Track

Mass - 0.205 kg/m  
Perimeter - 97 mm  
Stocked 5 m 803651 - 6060T5



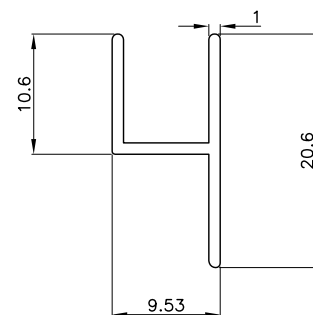
### E04338 - Bottom Track

Mass - 0.193 kg/m  
Perimeter - 92 mm  
Stocked 5 m - 803666 - 6060T5



### E04337 - Top Track

Mass - 0.233 kg/m  
Perimeter - 117 mm  
Stocked 5 m - 803665 - 6060T5

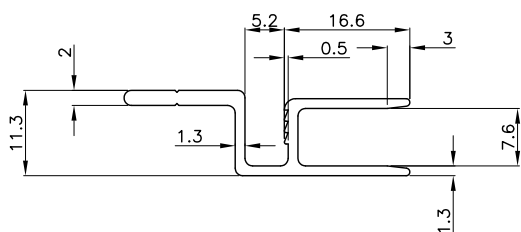


Mill runs only, Subject to minimum quantities - please ask regarding the availability of these.

Please note that diagrams, data and images are used for guidance purposes only. For correct details please request a specific die drawing from Altus Customer Services as radius locations and other specifications may vary. All peripheries less than 100mm are deemed 100mm for surface finish purpose.

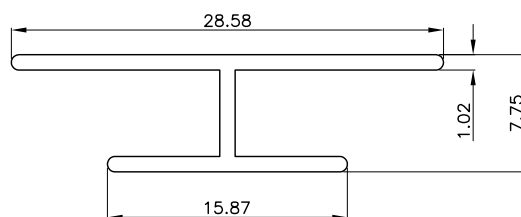
### 609299 - Insect / Security Fixed Frame

Mass - 0.280 kg/m  
Perimeter - 142 mm



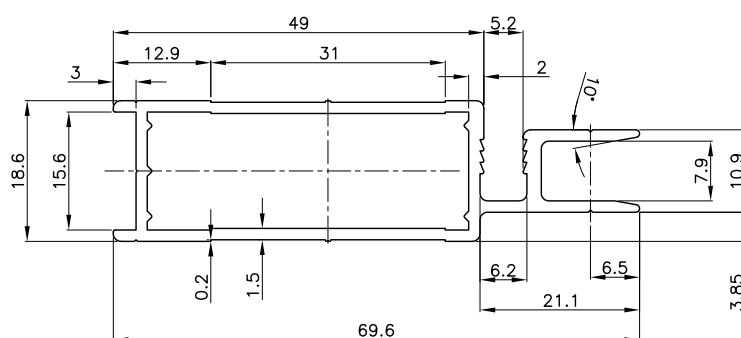
### E00358 - Jointer

Mass - 0.137 kg/m  
Perimeter - 101 mm



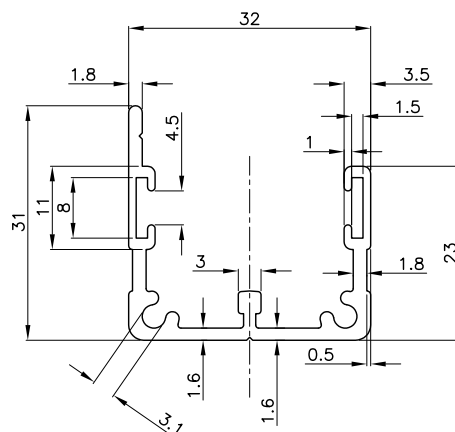
### E04852 - Insect / Security Screen Door

Mass - 0.722 kg/m  
Perimeter - 348 mm  
Stocked 3 m - 803683 - 6060T5



### 609733 - Security Sliding Frame

Mass - 0.464 kg/m  
Perimeter - 214 mm

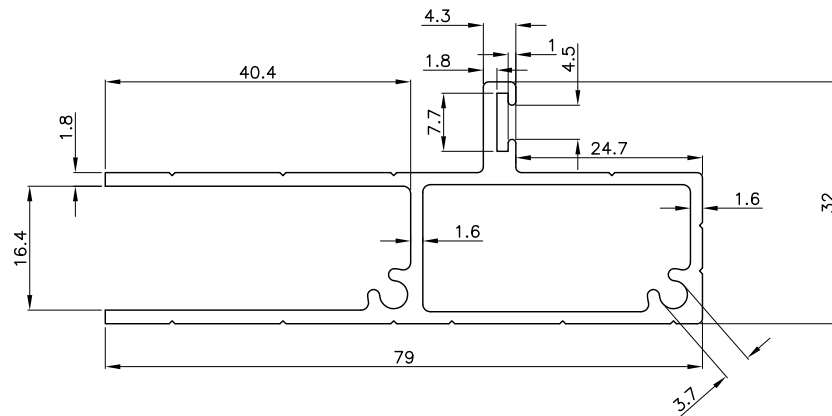


Mill runs only, Subject to minimum quantities - please ask regarding the availability of these.

Please note that diagrams, data and images are used for guidance purposes only. For correct details please request a specific die drawing from Altus Customer Services as radius locations and other specifications may vary. All peripheries less than 100mm are deemed 100mm for surface finish purpose.

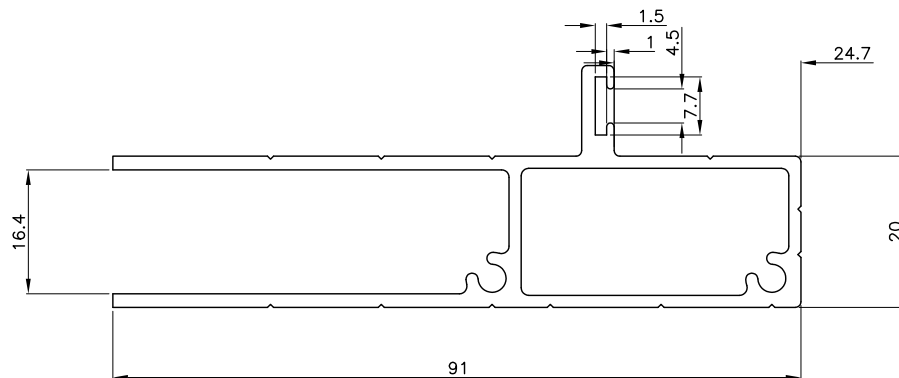
### 609545 - Door Stand Out Frame

Mass - 1.036 kg/m  
Perimeter - 321 mm



### 609758 - Door Stand Out Frame

Mass - 1.153 kg/m  
Perimeter - 369 mm



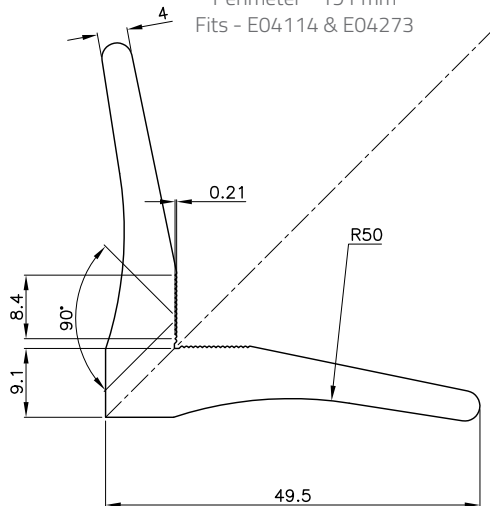
Mill runs only, Subject to minimum quantities - please ask regarding the availability of these.

Please note that diagrams, data and images are used for guidance purposes only. For correct details please request a specific die drawing from Altus Customer Services as radius locations and other specifications may vary. All peripheries less than 100mm are deemed 100mm for surface finish purpose.



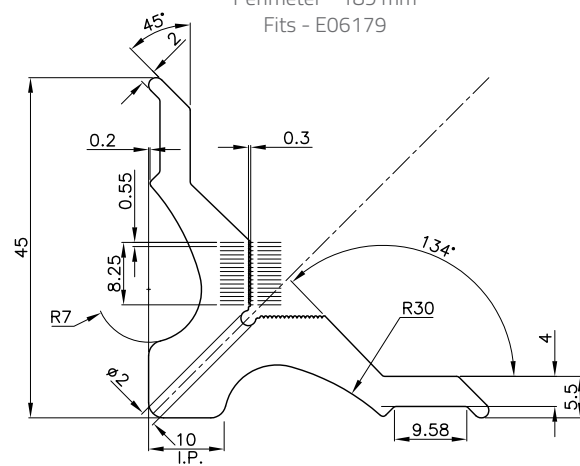
## E04728 - Staking Angle Window

Mass - 1.471 kg/m  
Perimeter - 191 mm  
Fits - E04114 & E04273



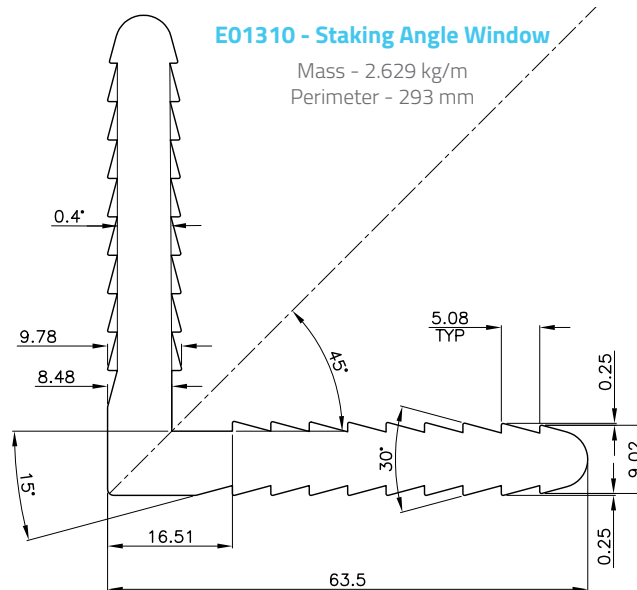
## E06899 - Staking Angle Window

Mass - 1.320 kg/m  
Perimeter - 189 mm  
Fits - E06179



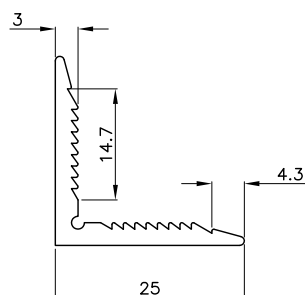
## E01310 - Staking Angle Window

Mass - 2.629 kg/m  
Perimeter - 293 mm



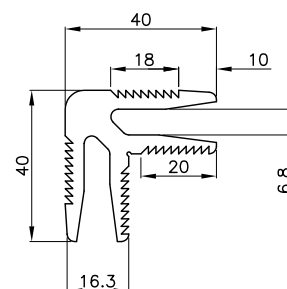
## 609556 - Staking Angle Window

Mass - 0.311 kg/m  
Perimeter - 116 mm



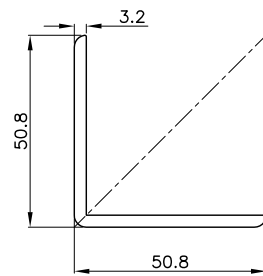
## 403162 - Staking Angle Window

Mass - 1.499 kg/m  
Perimeter - 354 mm



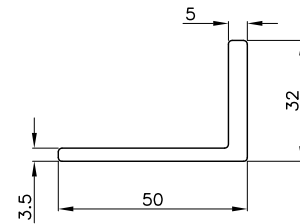
### E03839 - Angle

Mass - 0.833 kg/m  
Perimeter - 199 mm



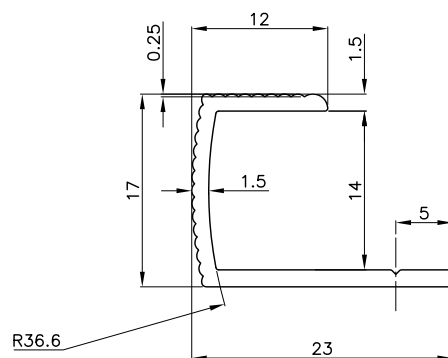
### E04480 - Angle

Mass - 0.855 kg/m  
Perimeter - 161 mm



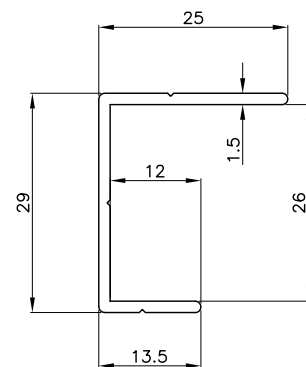
### E02731 - Odd Leg Channel

Mass - 0.186 kg/m  
Perimeter - 100 mm



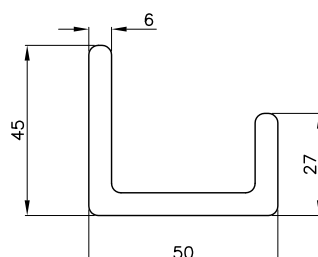
### 401140 - Odd Leg Channel

Mass - 0.258 kg/m  
Perimeter - 131 mm



### E13591 - Odd Leg Channel

Mass - 1.768 kg/m  
Perimeter - 223 mm

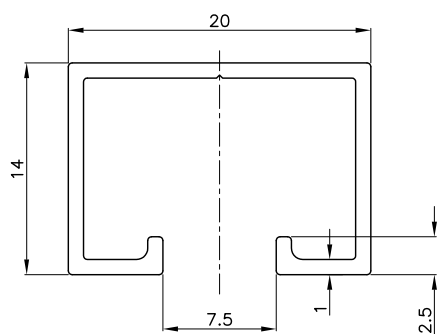


Mill runs only. Subject to minimum quantities - please ask regarding the availability of these.

Please note that diagrams, data and images are used for guidance purposes only. For correct details please request a specific die drawing from Altus Customer Services as radius locations and other specifications may vary. All peripheries less than 100mm are deemed 100mm for surface finish purpose.

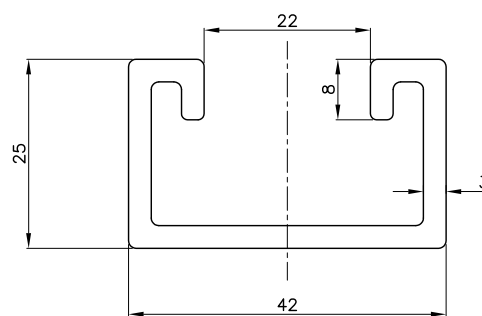
### E05542 - Lipped Channel

Mass - 0.642 kg/m  
Perimeter - 237 mm



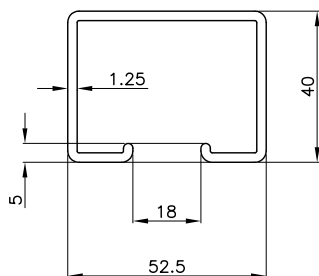
### E03694 - Lipped Channel

Mass - 0.888 kg/m  
Perimeter - 219 mm



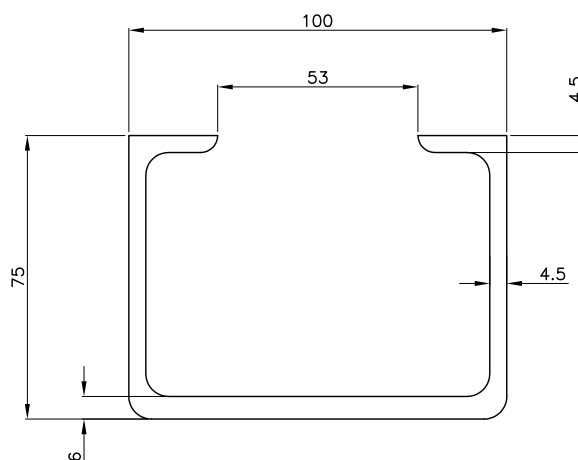
### 610468 - Lipped Channel

Mass - 1.063 kg/m  
Perimeter - 317 mm



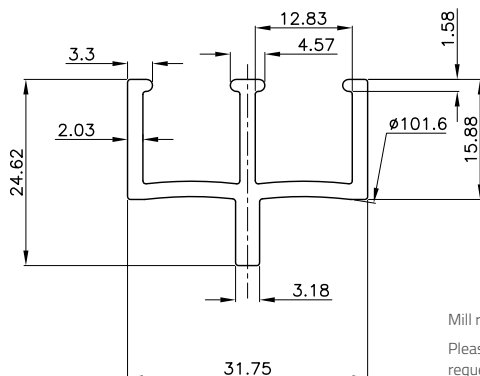
### 604096 - Lipped Channel

Mass - 3.777 kg/m  
Perimeter - 544 mm



### E01067 - Double Channel Leg

Mass - 0.496 kg/m  
Perimeter - 173 mm

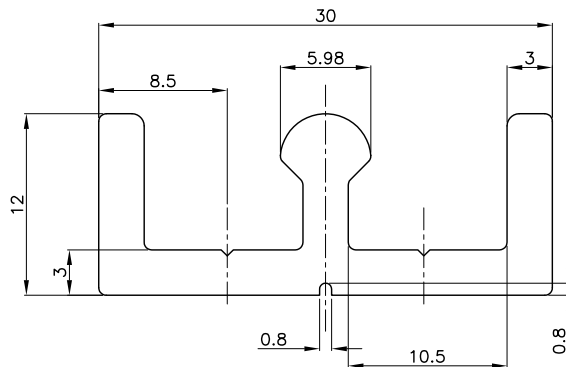


Mill runs only, Subject to minimum quantities - please ask regarding the availability of these.

Please note that diagrams, data and images are used for guidance purposes only. For correct details please request a specific die drawing from Altus Customer Services as radius locations and other specifications may vary. All peripheries less than 100mm are deemed 100mm for surface finish purpose.

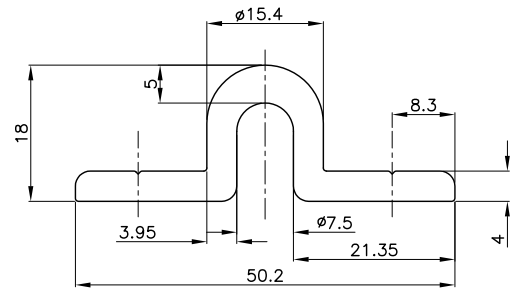
### E06032 - Sliding Door Track

Mass - 0.479 kg/m  
Perimeter - 121 mm  
Stocked 5 m - 803720 - 6060T5



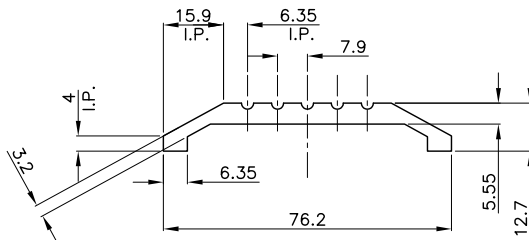
### E14108 - Sliding Door Track

Mass - 0.801 kg/m  
Perimeter - 149 mm  
Stocked 6m - 829328 - 6060T5



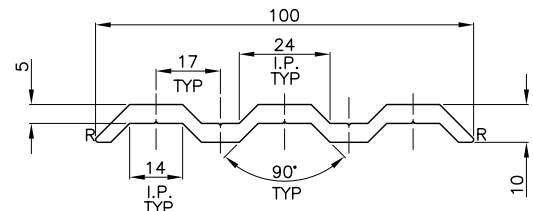
### 609359 - Threshold

Mass - 1.014 kg/m  
Perimeter - 183 mm



### 609342 - Threshold

Mass - 1.303 kg/m  
Perimeter - 231 mm



Mill runs only, Subject to minimum quantities - please ask regarding the availability of these.

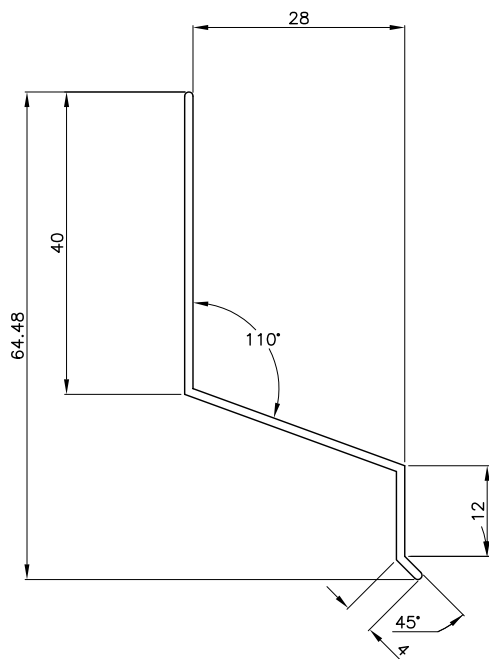
Please note that diagrams, data and images are used for guidance purposes only. For correct details please request a specific die drawing from Altus Customer Services as radius locations and other specifications may vary. All peripheries less than 100mm are deemed 100mm for surface finish purpose.

# Architectural

## Extruded Products

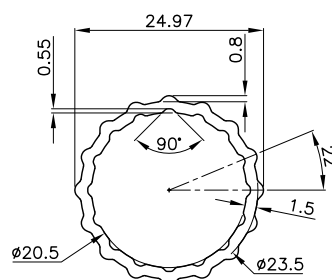
### 609707 - Flashing

Mass - 0.252 kg/m  
Perimeter - 171 mm



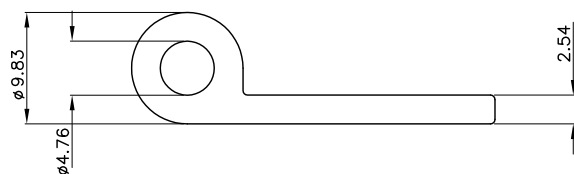
### E00408 - Ladder Rung

Mass - 0.304 kg/m  
Perimeter - 82 mm



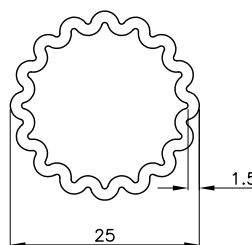
### E01248 - PIN

Mass - 0.323 kg/m  
Perimeter - 82 mm



### 603869 - Ladder Rung

Mass - 0.363 kg/m  
Perimeter - 94 mm

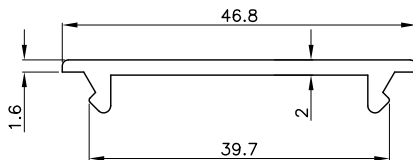


Mill runs only, Subject to minimum quantities - please ask regarding the availability of these.

Please note that diagrams, data and images are used for guidance purposes only. For correct details please request a specific die drawing from Altus Customer Services as radius locations and other specifications may vary. All peripheries less than 100mm are deemed 100mm for surface finish purpose.

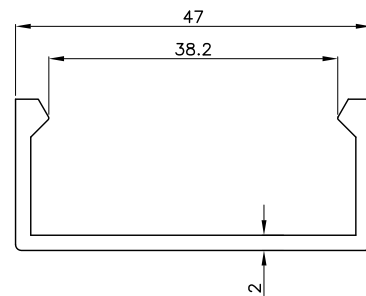
### 603026 - Channel Lid

Mass - 0.312 kg/m  
Perimeter - 114 mm  
Fits - 603506



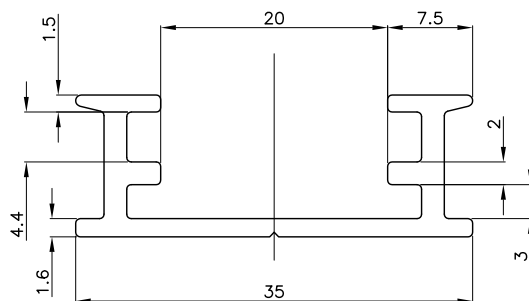
### 603506 - Channel Lid Clip Fit

Mass - 0.490 kg/m  
Perimeter - 174 mm  
Fits - 603026



### 606468 - DIN Rail

Mass - 0.341 kg/m  
Perimeter - 145 mm

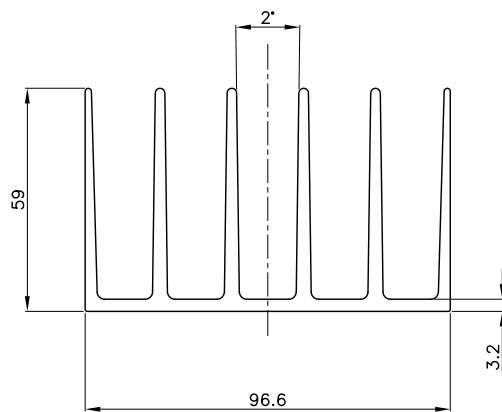


Mill runs only, Subject to minimum quantities - please ask regarding the availability of these.

Please note that diagrams, data and images are used for guidance purposes only. For correct details please request a specific die drawing from Altus Customer Services as radius locations and other specifications may vary. All peripheries less than 100mm are deemed 100mm for surface finish purpose.

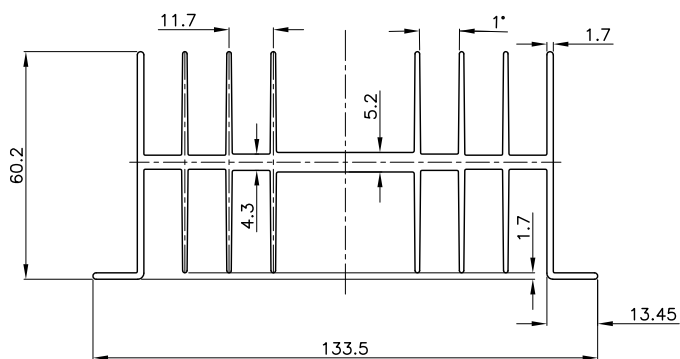
### E03072 - Heat Sink

Mass - 3.53 kg/m  
Perimeter - 846 mm



### E03398 - Heat Sink

Mass - 3.179 kg/m  
Perimeter - 1131 mm



Mill runs only, Subject to minimum quantities - please ask regarding the availability of these.

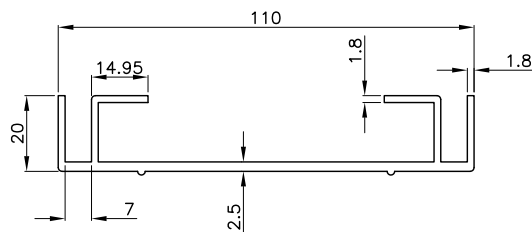
Please note that diagrams, data and images are used for guidance purposes only. For correct details please request a specific die drawing from Altus Customer Services as radius locations and other specifications may vary. All peripheries less than 100mm are deemed 100mm for surface finish purpose.

# Sign profiles

## Extruded Products

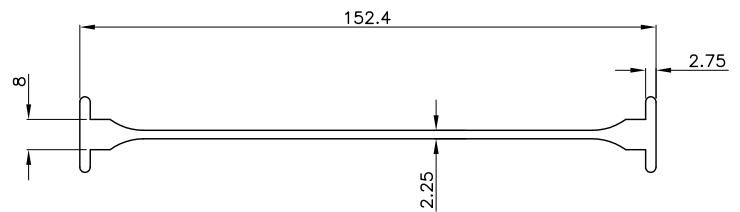
### 404368 - Sign Blade

Mass - 1.221 kg/m  
Perimeter - 418 mm



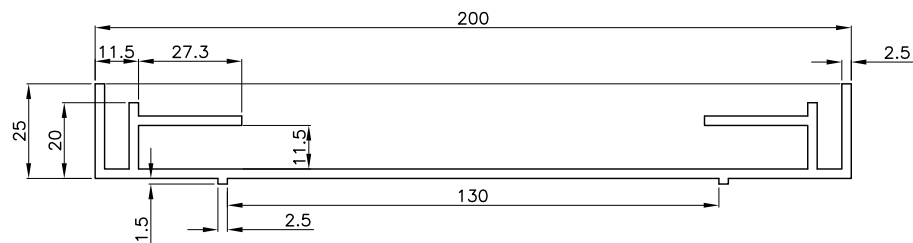
### 609585 - Sign Blade

Mass - 1.431 kg/m  
Perimeter - 366 mm



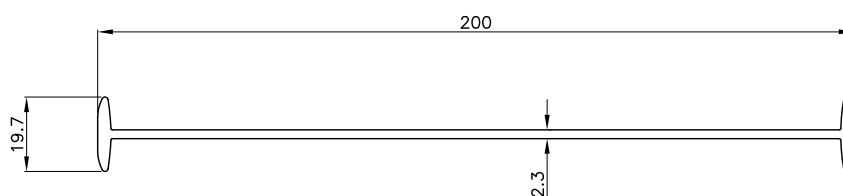
### 609792 - Sign Blade

Mass - 2.279 kg/m  
Perimeter - 680 mm



### 611501 - Sign Blade

Mass - 1.517 kg/m  
Perimeter - 464 mm



Mill runs only, Subject to minimum quantities - please ask regarding the availability of these.

Please note that diagrams, data and images are used for guidance purposes only. For correct details please request a specific die drawing from Altus Customer Services as radius locations and other specifications may vary. All peripheries less than 100mm are deemed 100mm for surface finish purpose.







# Contact details

## **Altus NZ Ltd**

49 Business Parade North  
East Tamaki  
Auckland 2013  
New Zealand

PO Box 204123  
Highbrook  
Auckland 2161  
New Zealand

**T:** 64 9 272 1700  
**Freephone:** 0800 77 77 44  
**F:** 64 9 272 1701  
**E:** office@altus.co.nz

## **Altus NZ Ltd**

30-32 Bowden Road  
Mt Wellington  
Auckland 1060  
New Zealand

PO Box 14107  
Panmure  
Auckland 1741  
New Zealand

**T:** 64 9 574 1500  
**Free Fax:** 0800 388 555  
**Freephone:** 0800 322 555  
**E:** cssupport@altus.co.nz  
**E:** admin@altus.co.nz

## **Altus NZ Ltd - Export**

49 Business Parade North  
East Tamaki  
Auckland 2013  
New Zealand

PO Box 204123  
Highbrook  
Auckland 2161  
New Zealand

**T:** 64 9 272 1714  
**F:** 64 9 272 1701  
**E:** export@altus.co.nz

## **Altus NZ Ltd - International**

30-32 Bowden Road  
Mt Wellington  
Auckland 1060  
New Zealand

PO Box 14107  
Panmure  
Auckland 1741  
New Zealand

**T:** 64 9 574 1500  
**F:** 64 9 574 1600  
**Freephone:** 0800 55 11 00  
**E:** international@altus.co.nz

## **Altus Aluminium Trade Centre**

49 Business Parade North  
East Tamaki  
Auckland 2013  
New Zealand

PO Box 204123  
Highbrook  
Auckland 2161  
New Zealand

**T:** 64 9 272 1725  
**F:** 64 9 272 1708  
**E:** sales@altus.co.nz

## **Altus Aluminium Trade Centre**

127 Maui Street  
Te Rapa  
Hamilton

**T:** 64 7 850 7450  
**F:** 64 7 847 9899  
**E:** inquiry.hamiltonTC@altus.co.nz

## **Altus Aluminium Trade Centre**

19 McTeigue Road  
Halswell  
Christchurch 8025

PO Box 37170  
Halswell  
Christchurch 8245

**T:** 64 3 343 7149  
**E:** inquiry.christchurchTC@altus.co.nz